

New Zealand



Wellington



★ = Te Papa

To Airport

# Te Papa

## More than a museum!

TE PAPA  
OUR PLACE



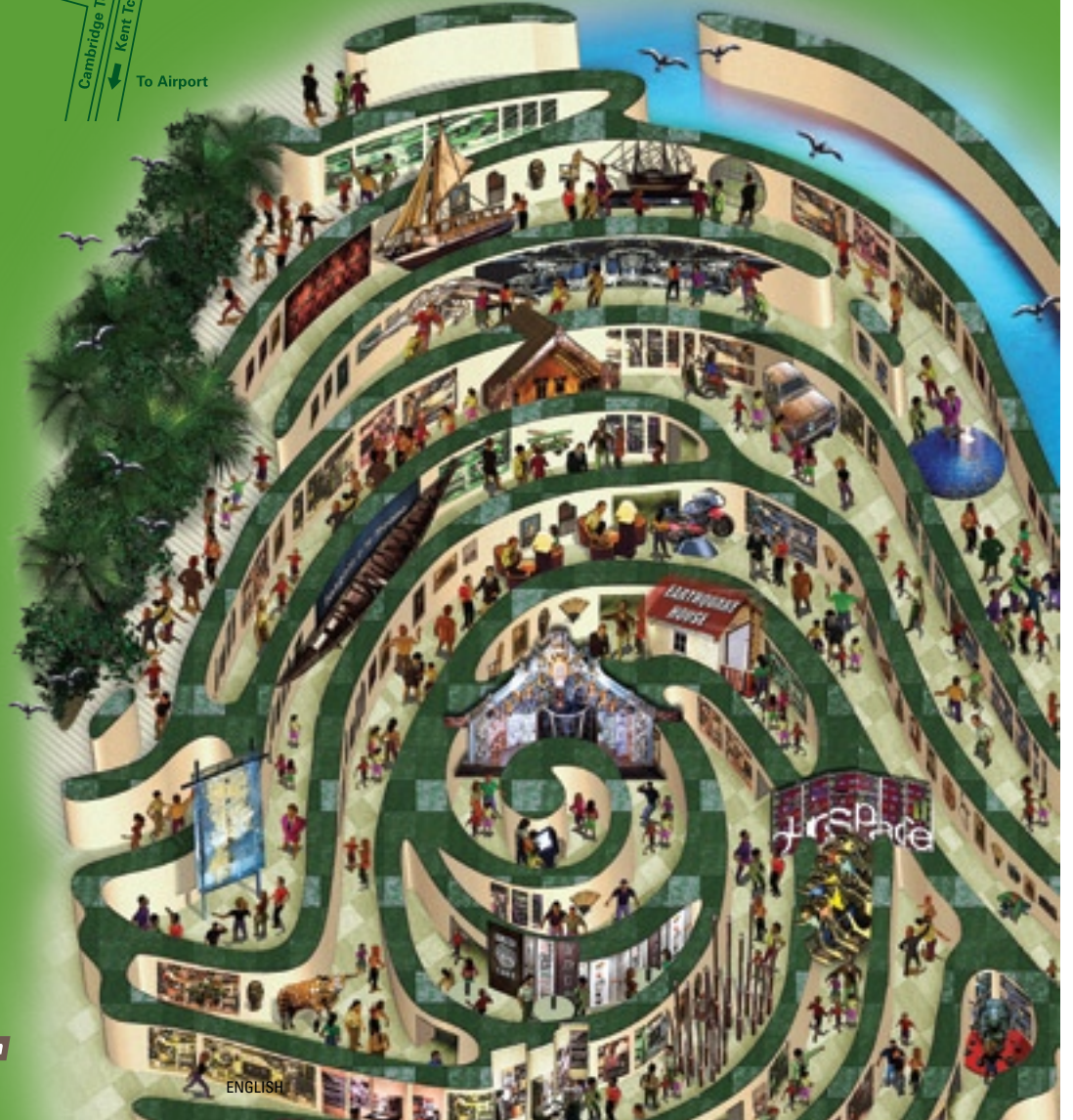
Experience the stories of  
New Zealand at our extraordinary  
interactive national museum.

### Free Admission.

Open 10am to 6pm every day  
of the year and until 9pm on  
Thursdays. Charges apply to  
some short-term exhibitions,  
tours, and *Our Space* rides.

**Parking** – available at Te Papa  
for cars and campervans at  
competitive rates.

Museum of New Zealand  
Te Papa Tongarewa  
Cable Street  
PO Box 467  
Wellington, New Zealand  
Phone +64 (4) 381 7000  
Fax +64 (4) 381 7070  
mail@tepapa.govt.nz  
[www.tepapa.govt.nz](http://www.tepapa.govt.nz)



TE PAPA  
OUR PLACE



Absolutely

**POSITIVELY**

Mc HARE WILSON  
WELLINGTON CITY COUNCIL

**Wellington**

ENGLISH



Welcome to the Museum of New Zealand Te Papa Tongarewa. To visit Te Papa is to encounter the breadth of this country's story – its unique natural history, the make-up of its diverse peoples, its distinctive art, and authentic expressions of the living culture of Māori.



'Kia Ora' brooch, about 1910, by J. Ziman.

At the heart of the museum is Te Papa's marae, Rongomaraeroa, a dynamic place that welcomes and makes connections with people from all over the world. The marae is an essential expression of Te Papa's bicultural principle. It is a partnership between tangata whenua – Māori, the indigenous people – and tangata tiriti, the people living in this country by right of the Treaty of Waitangi, the founding document of the nation.

Presenting the perspectives of this bicultural partnership is central to the Museum's work in its collections, exhibitions, research, and publications.

Nau mai, haere mai – come and explore the diverse strands from which the natural and cultural heritage of New Zealand is woven.

## Must-sees

Te Papa has so much to see and do, you could easily spend several days here – and many people do! But for those with limited time, here's a list of popular highlights from our long-term exhibitions.

**Awesome Forces** Experience the powerful geological forces that shape New Zealand's dramatic landscape. Don't miss the Earthquake House for a real shake-up! Level 2.

**Mountains to Sea** From kiwi to kauri, this exhibition offers a spectacular portrayal of the amazing variety of New Zealand's animal and plant life, and see Te Papa's colossal squid. Level 2.

**Our Space** Te Papa's spectacular multi-media adventure. Create your vision of New Zealand, or take a thrilling ride. Charges apply for rides. Level 2.

**Blood, Earth, Fire | Whāngai, Whenua, Ahi Kā** Take an extraordinary journey through Aotearoa New Zealand's changing landscape and wildlife. See extinct species return to life, and be immersed in the birdsong of a 1,000-year-old dawn chorus. Level 3.

**The Marae** Haere mai. Welcome to our dynamic and beautiful marae (communal meeting place) for the 21st century, designed and created by leading Māori carvers. Level 4.

**Mana Whenua** Explore the world of Māori, the tangata whenua (first people) of New Zealand. Stories of voyaging, conflict, and survival are told through a powerful mix of taonga (cultural treasures), oral histories, and contemporary works. Level 4.

**Golden Days** Step into a junk shop that comes alive! Enjoy a captivating, animated presentation of New Zealand's defining moments over the past 100 years. 12 minutes duration. Free entry, but booking is essential. Level 4.

**Toi Te Papa Art of the Nation** This is the place to start for New Zealand art. Take a look at the astonishing scope – European and Māori, historical and contemporary – of what art means in New Zealand. Level 5.

Join a one-hour **Introducing Te Papa Tour** (\$11 adults, \$5.50 children), or buy the **Te Papa Explorer** (\$3 from the Information Desk, Level 2) for maps of each floor. And be sure to look for directions on the **Wayfinding Towers**, or ask any **Te Papa Host** for help.

Explore Te Papa online at [www.tepapa.govt.nz](http://www.tepapa.govt.nz) and click on 'Visiting Te Papa' to help plan your visit. Check the web calendar to catch a fantastic event from our changing events programme.

## Tours

Explore Te Papa's exhibitions and collections with one of our knowledgeable Hosts. These guided tours are fun, informative, and inspiring – perfect for first-time visitors or for people wanting an in-depth experience.



### Daily Guided Tours

#### Introducing Te Papa Tour – 60 minutes

Join a Te Papa Host for a fun and informative introduction to Te Papa and its taonga (cultural treasures). This tour is ideal for visitors with limited time or as an overview for an extended visit.

Summer (1 November – 31 March): Tours depart at 10.15am, 11am, 12 noon, 1pm, 2pm, and 3pm. On Thursday nights, we offer an extra tour at 7pm.

Winter (1 April – 31 October): Tours depart at 10.15am and 2pm. On Thursday nights, we offer an extra tour at 7pm.

Cost: \$11 adult, \$5.50 child (aged 15 and under).

Purchase tickets at the Information Desk, Level 2. No booking required.

### Self-Guided Tours

The **Audio Guide** offers fascinating, informative commentary on Te Papa's taonga (cultural treasures). Available in English, Māori, German, and Japanese from the Information Desk, Level 2. \$5 per person.

**Te Papa Explorer** is a handy booklet with detailed maps of each level. \$3 per copy from the Information Desk, Level 2 or Te Papa Store, Level 1.



## Private Group Tours

Join one of our highly trained and experienced Hosts for an informative and inspiring tour tailored to your interests. These tours must be booked seven days in advance, and minimum charges apply.

### Māori Experience Tour and Kapu Tī Tour

The tour begins with a mihi (greeting) followed by a waiata (song) on The Marae (communal meeting place). Discover taonga (Māori cultural treasures) and hear their living stories. Learn a personal mihi. The tour ends with 'kapu tī' – a hot drink, traditionally inspired food, and a chance to talk further with your Host. Available without the food component. 60 or 90 minutes.

### Te Papa Highlights Tour

A fun and informative tour of Te Papa's highlights including the natural environment, Māori culture and treasures, art, history, and the colossal squid. Concludes with The High Ride, an exhilarating ride in *Our Space*. 90 minutes.

### Fabulous Te Papa Tour

This tour is a great way to sample New Zealand's unique treasures. The tour covers exhibition highlights from the natural environment, Māori culture and treasures, and art and colonial history. 90 minutes.

### Te Papa Sampler

Enjoy selected highlights – ideal for people on a busy itinerary or as an introduction to a longer visit. We tailor each tour to suit the nationalities and interests of the group. 60 minutes.

### Toi Te Papa Art Tour

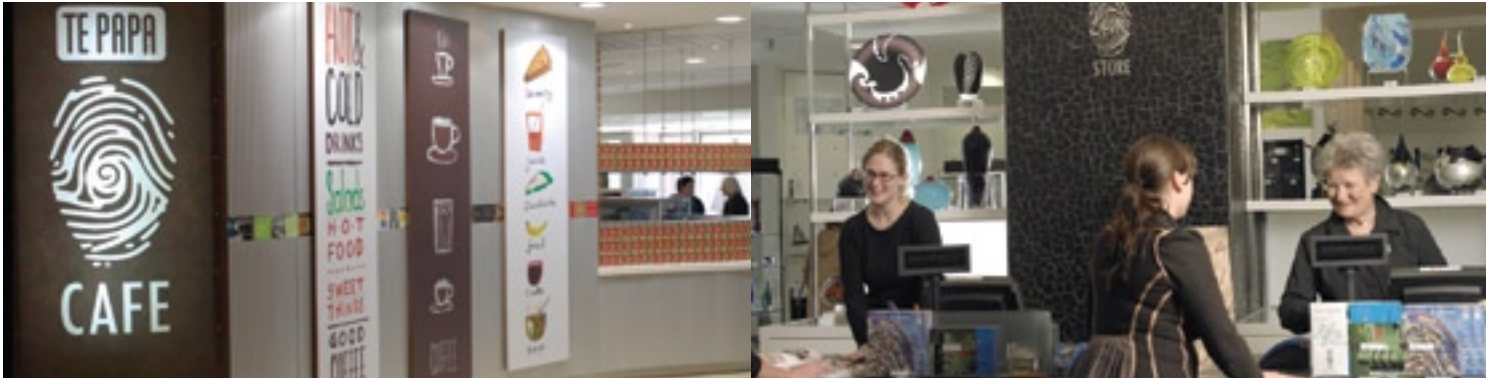
Join a knowledgeable guide to explore *Toi Te Papa Art of the Nation* – an exhibition of more than 300 of the nation's most significant artworks. Discover 1,000 years of New Zealand's art and visual culture. 60 or 90 minutes.

### Kiwi Discoverer

This tour focuses on activities in Te Papa's Discovery Centres and is suitable for international students aged 7 to 18 years. 90 minutes.

### Bookings

We can tailor all tours to your special interests, include catering options, and provide multilingual tour guides on request. For bookings and enquiries, please contact Te Papa Tours: +64 (4) 381 7111 or [reservations@tepapa.govt.nz](mailto:reservations@tepapa.govt.nz)



## Food and Drink

Take the time to relax and restore your energy in one of our welcoming cafés.

**Te Papa Café, Level 1**, is a bright family-friendly place to recharge yourself with a drink, casual meal, or fresh snack. Eat inside or enjoy your food outdoors in the Amphitheatre by *Bush City*.

**Level 4 Espresso**. Order a superb coffee, tea, or New Zealand wine, and sit back in the unique setting of Espresso. Located right at the heart of Te Papa, the café also offers a range of delicious cakes and light refreshments.



## Shopping

Whether you're shopping for gifts, kids, or a uniquely New Zealand memento just for you, something special is waiting for your discovery in Te Papa's fabulous shops.

Visit **Te Papa Store, Level 1**, and find treasures created by New Zealand's finest artists, jewellers, and crafts people. Choose the perfect gift from our range of books, clothing, and Te Papa-branded souvenirs.

**Te Papa Kids' Store, Level 2**, is full of delightful gifts, books, dress-ups, puzzles, and toys for children that are educational, fun, and distinctively New Zealand.

You can also shop online from Te Papa Store at [www.tepapastore.co.nz](http://www.tepapastore.co.nz)



Pendant by Hepi Maxwell, carved pounamu.

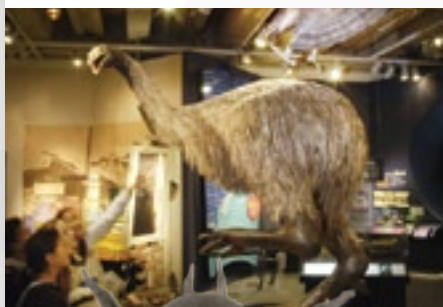
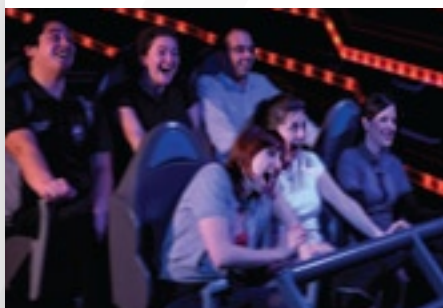
# Explore Te Papa

**Kia ora!** Haere mai – welcome. Discover the treasures and stories of this country's land and people – presented with creativity, thought, and passion. Te Papa offers a unique bicultural experience and has built a worldwide reputation for its engaging style.

Explore the six floors and five main collection areas of Te Papa: art, taonga (cultural treasures), natural history, history, and Pacific cultures.

Pick up a copy of our monthly brochure at the Information Desk, Level 2, to check out our vibrant and varied events and entertainment programme – floortalks, performances, activities, and shows.

**We hope you enjoy your visit to our innovative museum.**



*Endeavour cannon, about 1750-60, by Joseph Christopher.*



## Level 1

This is the entrance to the Museum. Find safe storage for coats and bags, or access an ATM (money machine).

**Te Papa Store** features works on sale by New Zealand's finest artists, and **Te Papa Café** specialises in fresh food and drinks for the family. Venture outside to **Bush City**, a living, growing exhibition that brings New Zealand's great outdoors into the city. Take in some of the wonders of our lush natural environment, cross a swing bridge, visit a glow-worm cave or wetland, climb a lava flow, or dig for fossils.

You'll recognise **Te Papa Hosts** by their distinctive blue or red 'thumb print' shirts – ask them what's on.



Bush City.



## Level 2

Our Hosts at the **Information Desk** will give you up-to-date information on exhibitions, events, and all our facilities. You can also make bookings for our Introducing Te Papa tours.

Experience our unique natural environment in **Awesome Forces**. Learn how plate tectonics, earthquakes, volcanoes, and water have shaped New Zealand's landscape. Get shaken up in the Earthquake House, see eruptions on the big screen, and watch *Papatūānuku*, the Māori creation story.

From kiwi to kauri, **Mountains to Sea** presents fascinating stories of New Zealand's animals and plants. Explore our six major ecosystems – mountain, forest, freshwater, coast, open sea, and deep ocean. Visit Te Papa's colossal squid specimen and explore its life through a 3-D animated movie.

Kids and families, enjoy games and activities in the **NatureSpace Discovery Centre**. Visit the **Te Papa Kids' Store**, full of delightful gifts for children.

Venture into **Our Space**, an exciting new interactive zone that explores New Zealand identity. Discover The Map, The Wall, and motion-simulator experiences The High Ride and The Deep Ride. Charges apply for rides.



## Level 3

**Blood, Earth, Fire | Whāngai, Whenua, Ahi Kā** takes you on an extraordinary journey through the changing landscape of New Zealand. Experience the dramatic story of the transformation of this once untouched environment into cultivated land. Explore the plants and animals that existed here before people arrived, such as the stout-legged moa and the adzebill. And be immersed in the birdsong of a 1,000-year-old dawn chorus.

Through beautiful taonga (Māori cultural treasures), learn about the protective and nurturing properties of Papatūānuku (earth mother), navigate the interactive maramataka (Māori lunar calendar), and see striking and beautiful places in the spectacular film *My Place*.

The **Endeavour cannon** (Level 3) and **de Surville's anchor** (on the wall inside the Entrance, Level 1) are linked with the Pacific voyages of explorers Cook and de Surville and the first significant contact between Māori and Europeans.





Te Tākinga pātaka (storehouse), Ngāti Pikiao, originally carved by Te Hāreti Te Whanarere (Ngāti Māhino).

## Level 4

Experience the vitality and diversity of Māori culture through stories and taonga (cultural treasures) in **Mana Whenua**. Come inside **Rongomaraeroa**, Te Papa's contemporary marae (communal meeting place) created by leading Māori carvers. Learn about the Treaty of Waitangi, New Zealand's founding document, in **Signs of a Nation**. Celebrate New Zealand's cultural diversity in **Passports**, which tells compelling stories of the immigrants to this country.

In **Tangata o le Moana: The story of Pacific people in New Zealand**, discover the depth of Pacific influence in this country. Explore the stories, treasures, and achievements of Pacific people here and learn about the relationship between New Zealand and its Pacific neighbours.

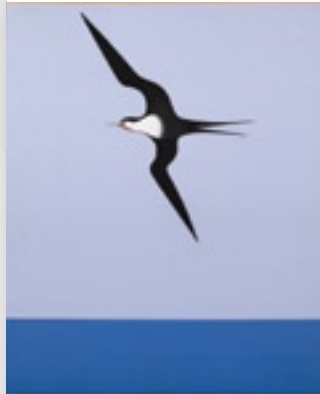
Venture into **Golden Days**. This amazing junk shop comes alive with a 12-minute interactive presentation. Watch amusing and poignant highlights of the last 100 years of New Zealand history.

Our **Discovery Centres** are full of colourful activities for kids and families. **Te Huka ā Tai** is about Māori culture, **PlaNē Pasifika** is a journey into the Pacific, and **Inspiration Station** explores art and history.

**Te Aka Matua Library and Information Centre** is a storehouse of knowledge – books, magazines, and photographs for general interest or research.

Visit the **Visa Platinum Gallery** for the latest short-term exhibition, or the **Eyelights Gallery** for a changing showcase of rare treasures. **The Hott Room** displays a changing selection from Te Papa's collection of works on paper.

Relax in comfort at **Level 4 Espresso** at the heart of Te Papa and enjoy drinks and light snacks.



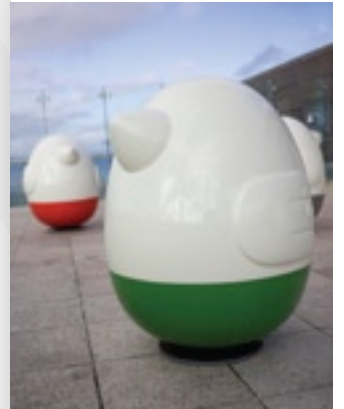
Detail of *Pacific frigate bird 1*, 1968, by Don Binney.

## Level 5

**Toi Te Papa Art of the Nation** is Te Papa's signature art show, occupying the whole of Level 5. This exhibition showcases more than 300 impressive artworks – both historical and contemporary – from Te Papa's collections. Experience New Zealand's rich and diverse artistic heritage.






Entrance to *Toi Te Papa Art of the Nation* exhibition. In background *Whakapiri atu te whenua*, 1993, by Shane Cotton.



*Oddooki* 2008, Seung Yul Oh (b. 1981), resin on fibreglass, automotive paint, steel mechanism, courtesy of the artist.

## Level 6

Discover more short-term exhibitions on art and visual culture at the top of Te Papa – in the inside gallery and on the outdoor **Sculpture Terrace**. The terrace is home to contemporary sculpture by leading artists and boasts spectacular views across Wellington's harbour and city.

-  Toilets
-  Information
-  Food and Drink
-  Shopping

The Marae.  
Hull of the vaka (canoe) *Tauhunu*, about 1900, Manihiki, Cook Islands.  
*Golden Days* exhibition.



*Pisupo lua afe*  
(Corned beef 2000), 1994,  
by Michel Tuffery.



Poutokomanawa (carved centre post), iwi unknown.



Detail of *Darby and Joan* (Ina Te Papatahi, Ngā Puhī), 1903, by Charles Frederick Goldie.



*The Big D.E.*, 2006, by Michael Parekowhai.  
Courtesy of Michael Lett.



*Hei tiki* (pendant), 2001, by Rangī Kipa.



City view of Wellington.