

International Journal of Computational Intelligence and Applications  
© World Scientific Publishing Company

**Supplimentary Materials of the paper “Binary PSO and Rough Set Theory for  
Feature Selection: A Multi-Objective Filter Based Approach”**

Bing Xue<sup>1,2</sup> \*, Liam Cervante<sup>1</sup>, Lin Shang<sup>2</sup>, Will N. Browne<sup>1</sup>, and Mengjie Zhang<sup>1</sup>

<sup>1</sup>School of Engineering and Computer Science, Victoria University of Wellington, PO Box 600, Wellington  
6140, New Zealand

<sup>2</sup>*State Key Laboratory of Novel Software Technology, Nanjing University, Nanjing 210046, China*

This section provides the detailed testing results of using the three classification algorithms, i.e. DT, 5NN and NB to evaluate the error rates of the selected features. Please see the next pages.

\*Corresponding author. Email: Bing.Xue@ecs.vuw.ac.nz

2 Bing Xue et al.

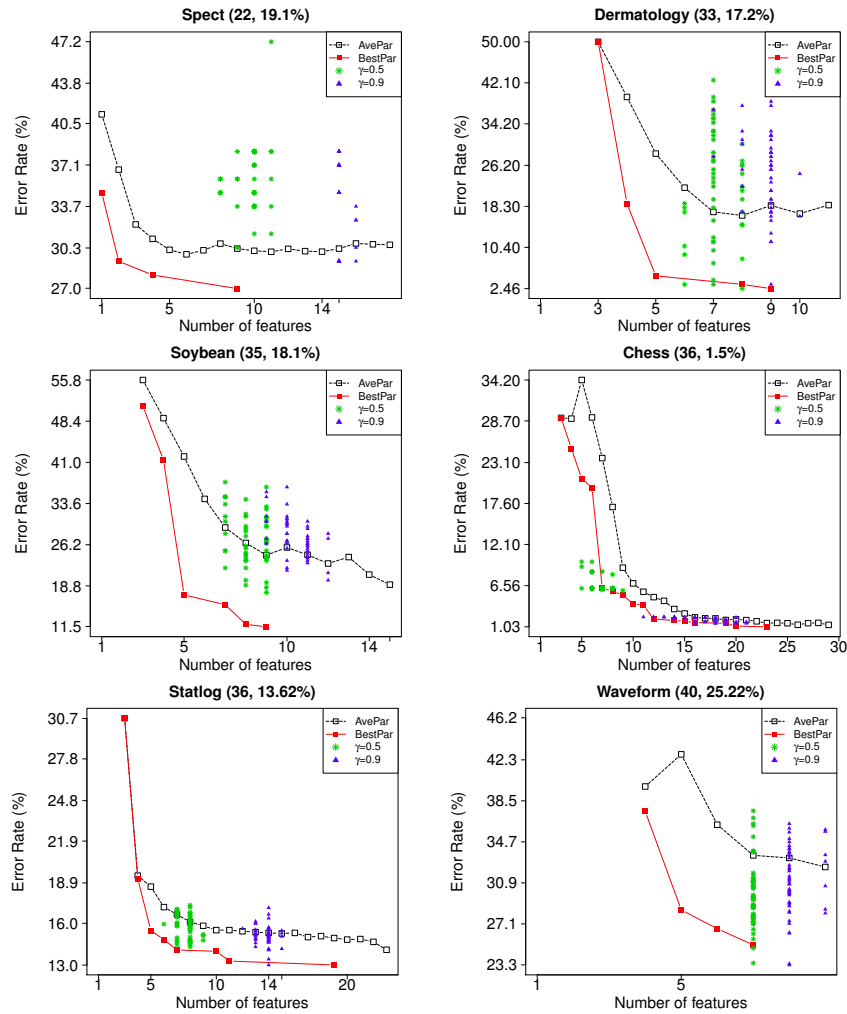


Fig. 1: Results of MORSN and PSOPRSN on test sets evaluated by DT.

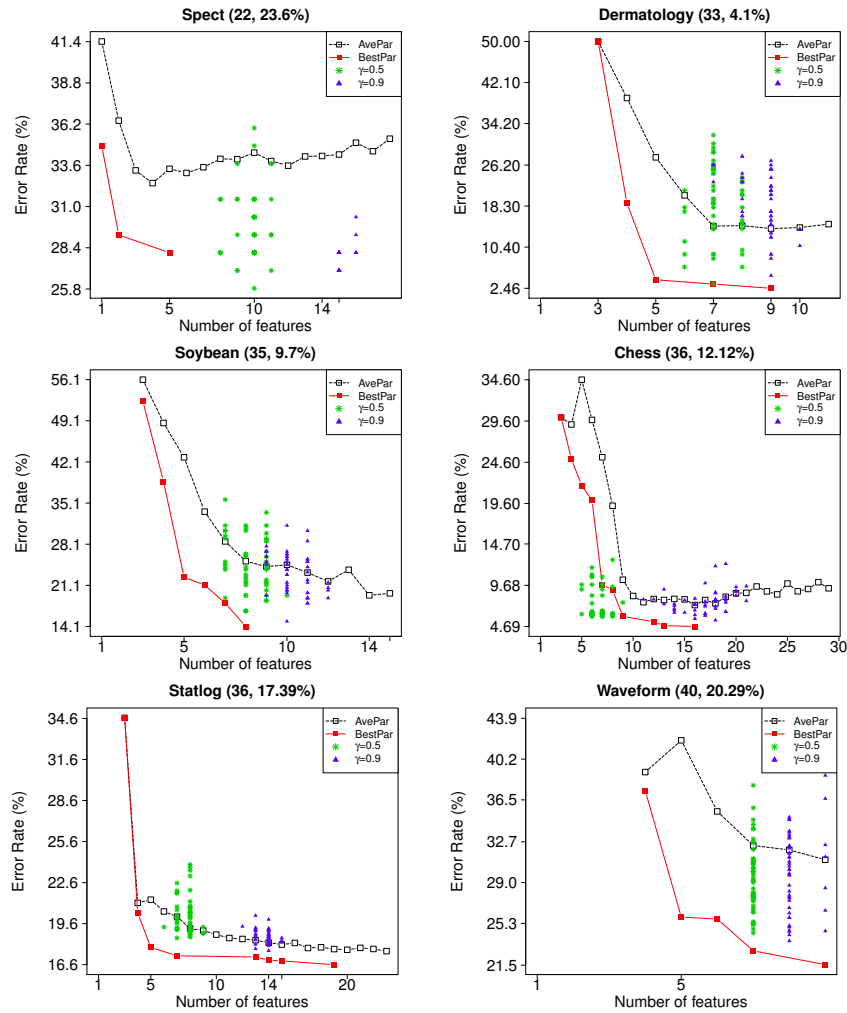


Fig. 2: Results of MORSN and PSOPRSN on test sets evaluated by NB.

4 Bing Xue et al.

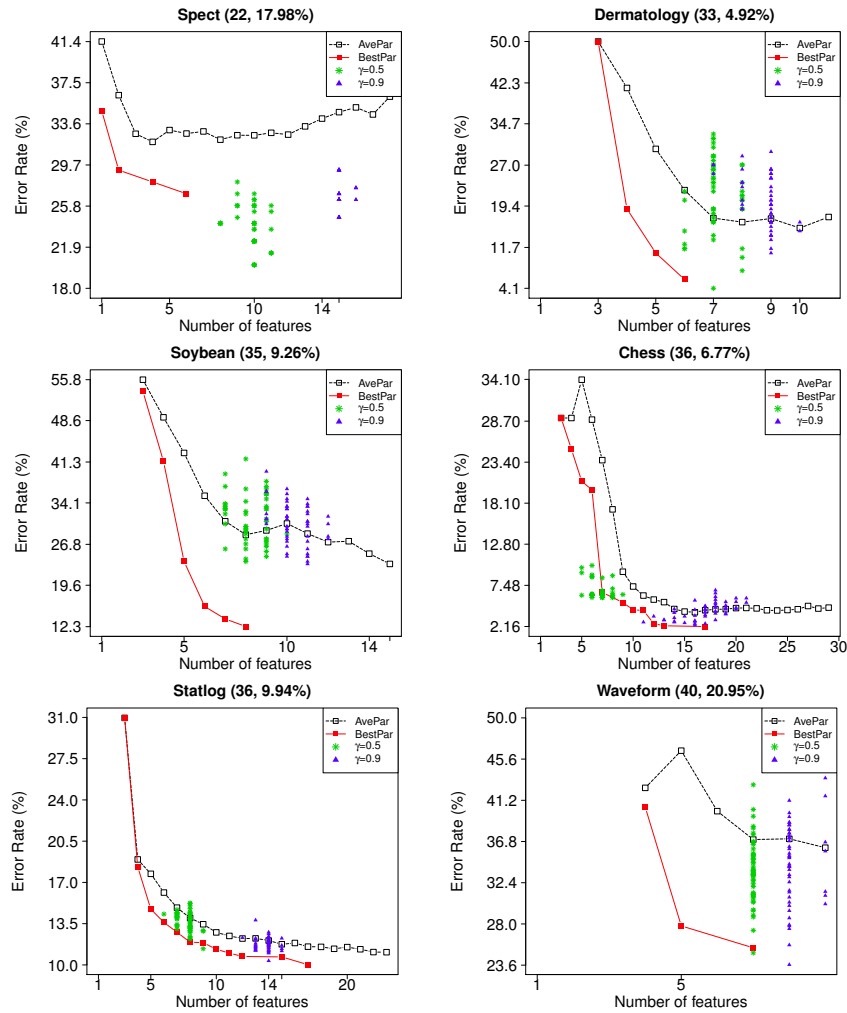


Fig. 3: Results of MORSN and PSOPRSN on test sets evaluated by 5NN.

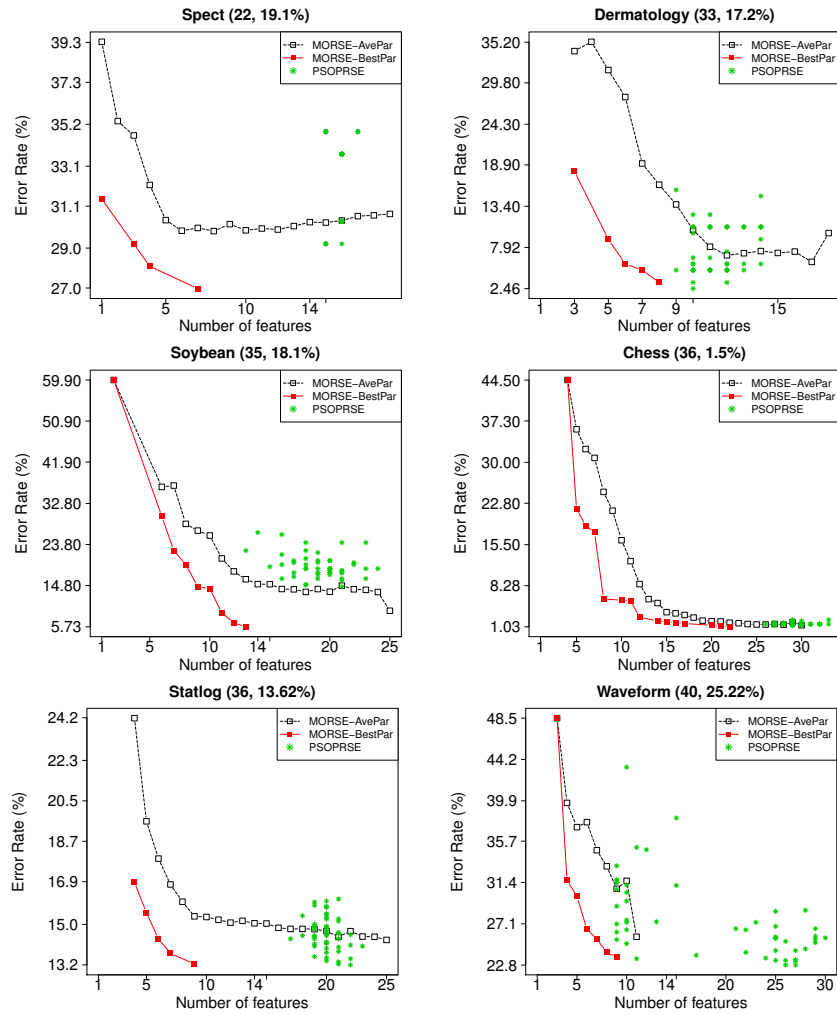


Fig. 4: Results of MORSE and PSOPRSE on test sets evaluated by DT.

6 Bing Xue et al.

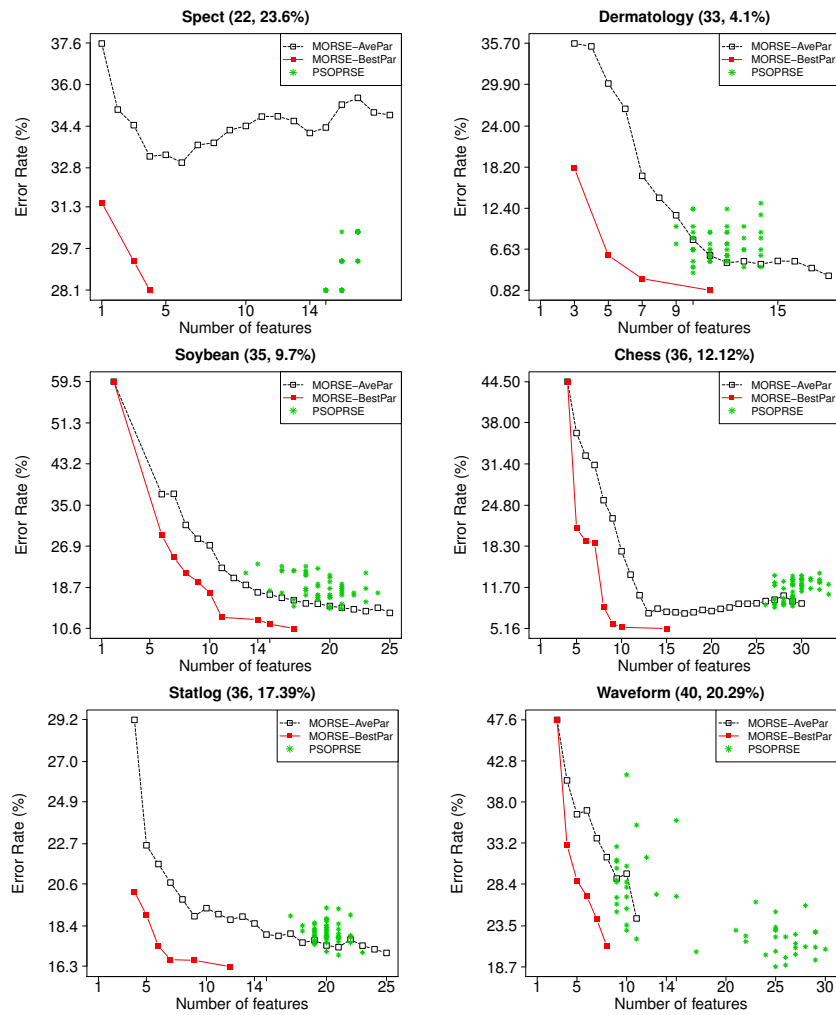


Fig. 5: Results of MORSE and PSOPRSE on test sets evaluated by NB.

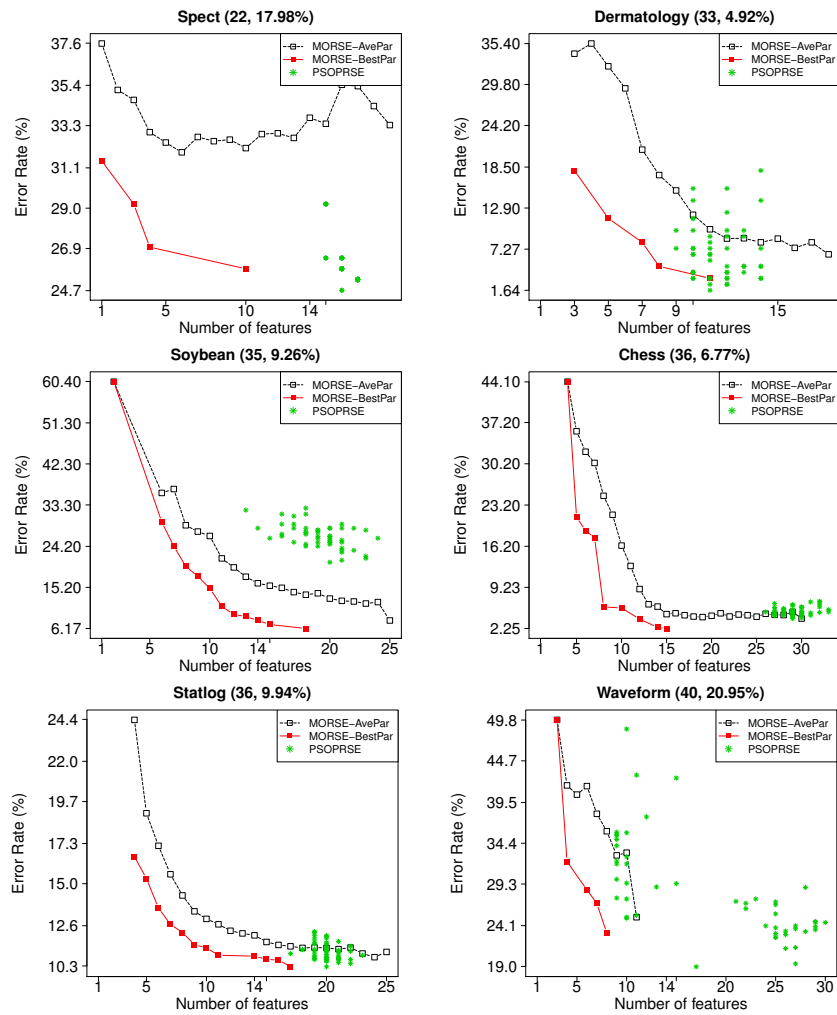


Fig. 6: Results of MORSE and PSOPRSE on test sets evaluated by 5NN.

8 Bing Xue et al.

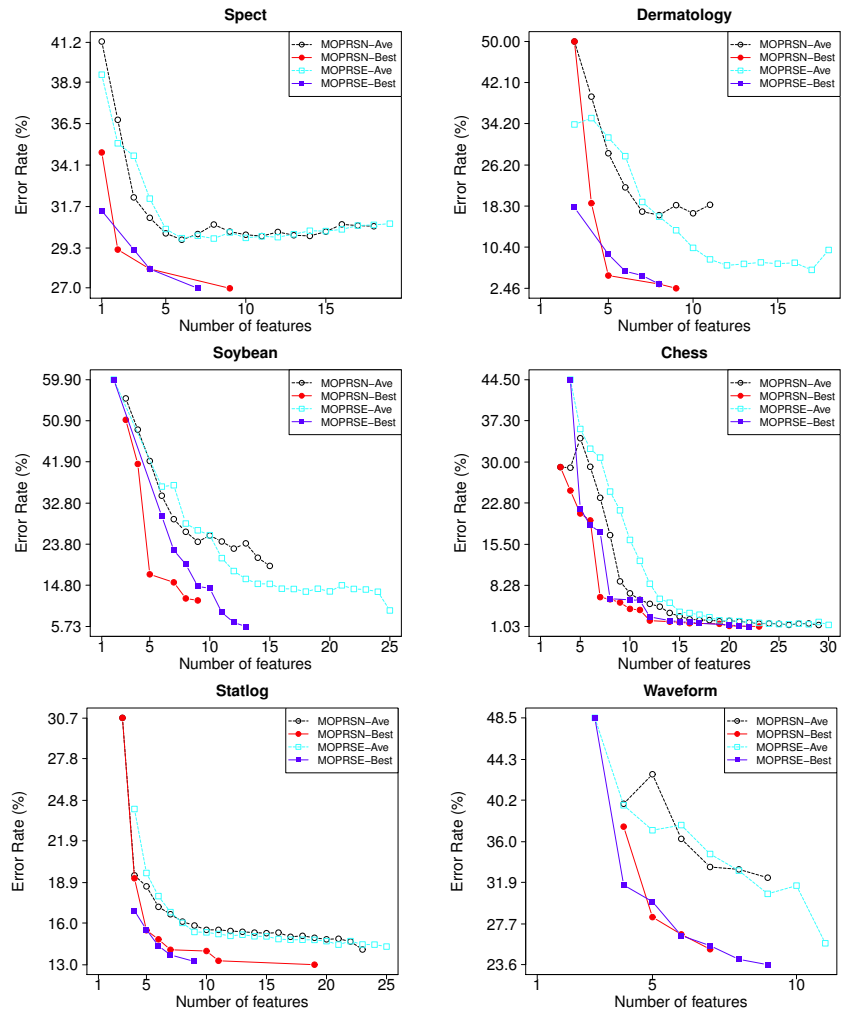


Fig. 7: Results of MORSN and MORSE on test sets evaluated by DT.



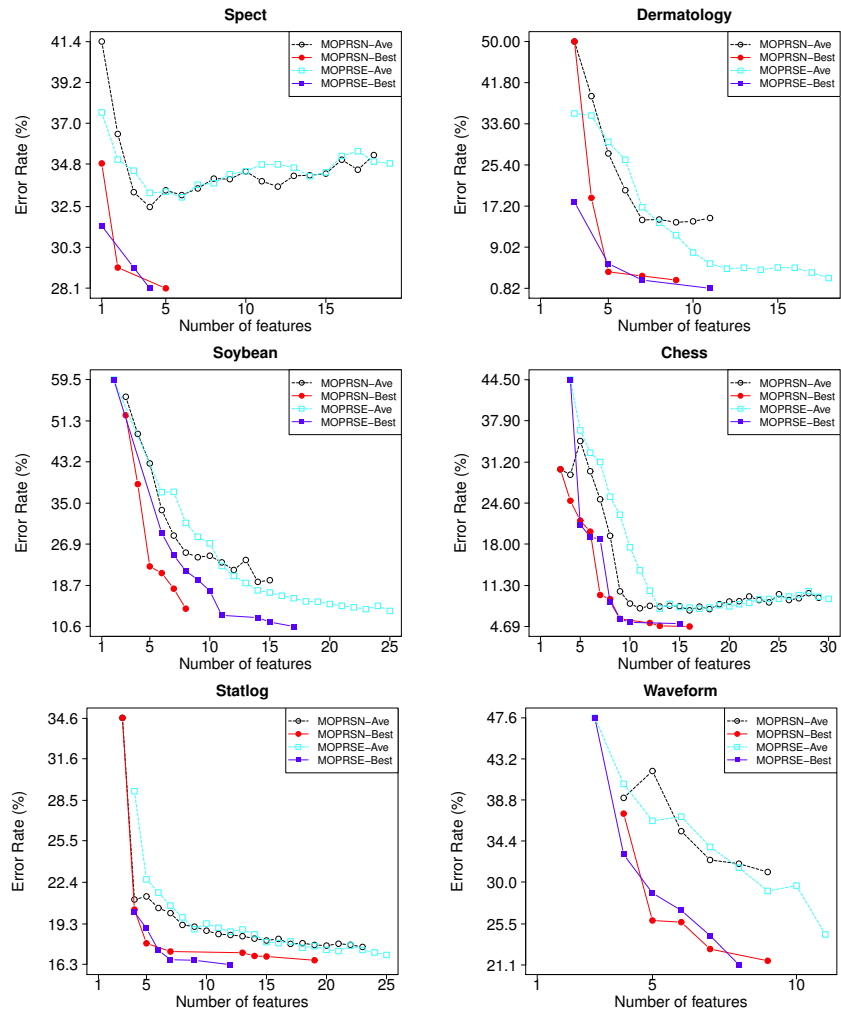


Fig. 8: Results of MORSN and MORSE on test sets evaluated by NB.

10 Bing Xue et al.

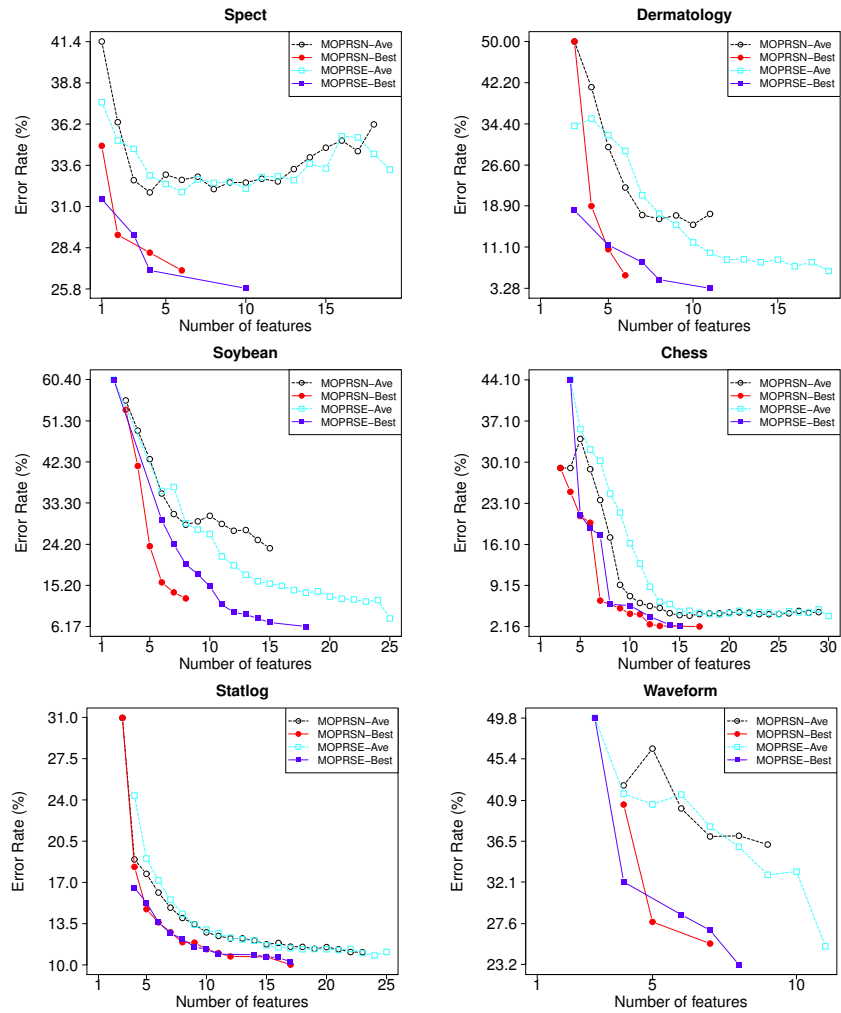


Fig. 9: Results of MORSN and MORSE on test sets evaluated by 5NN.